

FEDERAL NETWORK OF VOCATIONAL, SCIENTIFIC AND TECHNOLOGICAL EDUCATION

Training qualified
professionals and
transforming *lives*

2022



ABOUT CONIF



The National Council for the Federal Network of Vocational, Scientific, and Technological Education carries out technical and strategic actions to foster public, free-of-cost education at a high level of excellence.

It is a forum for discussing, proposing, and promoting policies for the development of vocational and technological education, research, and innovation.

Conif's main objective is to enhance, strengthen, and consolidate its 41 associated institutions.

MISSION



To strengthen the Federal Network's institutions through political coordination and representation, to the benefit of high-quality education that is public and socially approved.

VISION



To be nationally and internationally acknowledged as an advocate for innovative and inclusive vocational, scientific, and technological education.

CORE VALUES



Unity, democratic management, sustainability, equity, transparency, ethics, and solidarity.





ASSOCIATED INSTITUTIONS



NORTH

Instituto Federal do Acre (Ifac)
www.ifac.edu.br
Instituto Federal do Amapá (Ifap)
www.ifap.edu.br
Instituto Federal do Amazonas (Ifam)
www.ifam.edu.br
Instituto Federal do Pará (IFPA)
www.ifpa.edu.br
Instituto Federal de Rondônia (Ifro)
www.ifro.edu.br
Instituto Federal de Roraima (IFRR)
www.ifrr.edu.br
Instituto Federal do Tocantins (IFTO)
www.ifto.edu.br

NORTHEAST

Instituto Federal de Alagoas (Ifal)
www.ifal.edu.br
Instituto Federal da Bahia (IFBA)
www.ifba.edu.br
Instituto Federal Baiano (IF Baiano)
www.ifbaiano.edu.br
Instituto Federal do Ceará (IFCE)
www.ifce.edu.br
Instituto Federal do Maranhão (IFMA)
www.ifma.edu.br
Instituto Federal da Paraíba (IFPB)
www.ifpb.edu.br
Instituto Federal de Pernambuco (IFPE)
www.ifpe.edu.br
Instituto Federal do Piauí (IFPI)
www.ifpi.edu.br
Instituto Federal do Rio Grande do Norte (IFRN)
www.ifrn.edu.br
Instituto Federal de Sergipe (IFS)
www.ifs.edu.br
Instituto Federal do Sertão Pernambucano (IF Sertão-PE)
www.ifsertao-pe.edu.br

MIDWEST

Instituto Federal de Brasília (IFB)
www.ifb.edu.br
Instituto Federal Goiano (IF Goiano)
www.ifgoiano.edu.br
Instituto Federal de Goiás (IFG)
www.ifg.edu.br

Instituto Federal de Mato Grosso (IFMT)
www.ifmt.edu.br
Instituto Federal de Mato Grosso do Sul (IFMS)
www.ifms.edu.br

SOUTHEAST

Centro Federal de Educação Tecnológica Celso Suckow da Fonseca (Cefet/RJ)
www.cefet-rj.br
Centro Federal de Educação Tecnológica de Minas Gerais (Cefet-MG)
www.cefetmg.br
Colégio Pedro II (CPII)
www.cp2.g12.br
Instituto Federal do Espírito Santo (Ifes)
www.ifes.edu.br
Instituto Federal Fluminense (IFF)
www.iff.edu.br
Instituto Federal de Minas Gerais (IFMG)
www.ifmg.edu.br
Instituto Federal do Norte de Minas Gerais (IFNMG)
www.ifnmg.edu.br
Instituto Federal do Rio de Janeiro (IFRJ)
www.portal.ifrj.edu.br
Instituto Federal de São Paulo (IFSP)
www.ifsp.edu.br
Instituto Federal do Sudeste de Minas Gerais (IF Sudeste MG)
www.ifsudestmg.edu.br
Instituto Federal do Sul de Minas Gerais (IFSULDEMINAS)
www.ifsuldeminas.edu.br
Instituto Federal do Triângulo Mineiro (IFTM)
www.iftm.edu.br

SOUTH

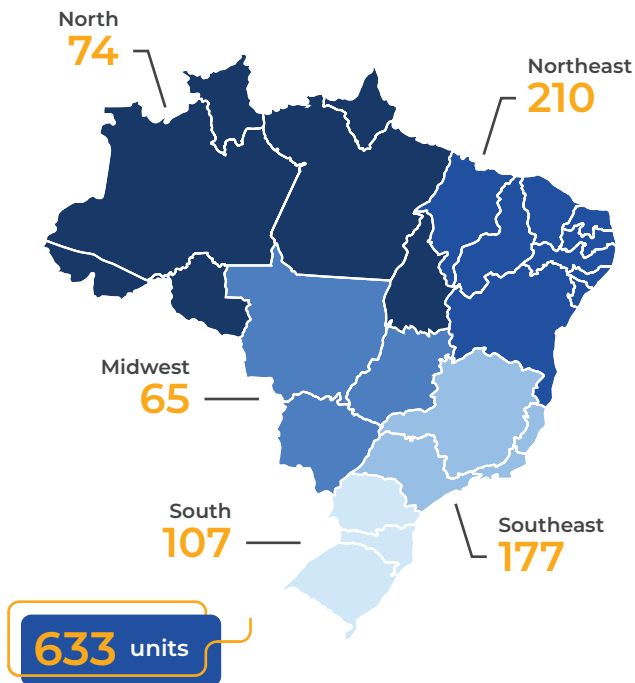
Instituto Federal Catarinense (IFC)
www.ifc.edu.br
Instituto Federal Farroupilha (IFFar)
www.iffarroupilha.edu.br
Instituto Federal do Paraná (IFPR)
www.ifpr.edu.br
Instituto Federal do Rio Grande do Sul (IFRS)
www.ifrs.edu.br
Instituto Federal de Santa Catarina (IFSC)
www.ifsc.edu.br
Instituto Federal Sul-rio-grandense (IFSul)
www.ifsul.edu.br



ABOUT THE FEDERAL NETWORK



The Federal Network of Vocational, Scientific, and Technological Education gathers 633 schools in 578 municipalities all over the country, committed to promoting social inclusion and diversity, and offering high-quality public education to over a million students.



Font: Plataforma Nilo Peçanha/MEC

The Federal Network is made up of:

- 38 Federal Institutes of Education, Science, and Technology (IF)
- 2 Federal Centers of Technological Education (CEFET)
- Colégio Pedro II

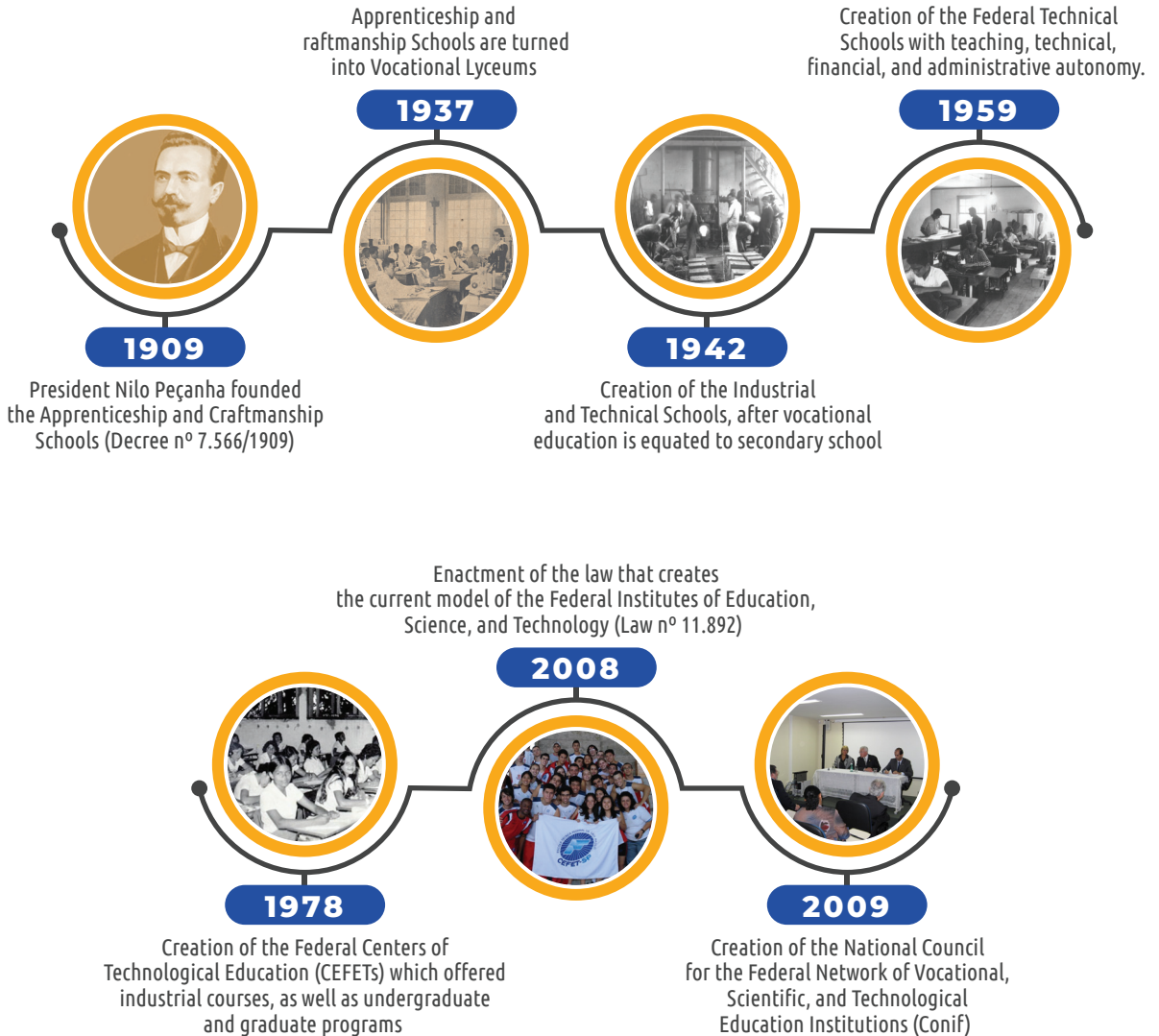
Point the camera at the code



And learn about the federal network institutions



TIMELINE





EDUCATIONAL LEVELS



GRADUATE

- *Stricto Sensu*
(Master's and
Doctorate Degrees) } 2 TO 4
YEARS
- *Lato Sensu*
(Specialization and MBA) } 1
YEAR

TECHNICAL EDUCATION

- *Integrated to
secondary School* } 3 TO 4
YEARS
- *Further Education*
(Proeja**, Technical Education
e Initial and Continuing
Education***) } UP 2
YEARS

** Basic education integrated to secondary school for adults and young adults.

*** Short term courses focused on raising workers' vocational skills and schooling levels.

VERTICAL INTEGRATION

UNDERGRADUATE

- *Bachelor's Degree* } 4 TO 5
YEARS
- *Technological Degree* } 2 TO 3
YEARS
- *Teacher training* } 4
YEARS

PRIMARY EDUCATION

- *Pre-primary education** } 3
YEARS
- *Primary education** } 9
YEARS
- *Secondary education* } 3
YEARS
- *Technical Education*
(Proeja, Integrated, and
Further Education) } 3
YEARS

* Offered exclusively by Pedro II School.



FEDERAL NETWORK IN NUMBERS



Over
1,4 million
students enrolled



Over
80 thousand
permanent
workers staff



10,7
programs



633 campuses in
578 municipalities
all over the country



14
Innovation Hubs



Over
7 thousand
extension/outreach
projects



Over
11 thousand
research projects



Cooperation with over
30 countries





THE FEDERAL NETWORK FRAMEWORK



- Vertical integration of education
- Assistive technologies
- Applied research
- Sustainability
- Technological outreach
- Internationalization
- Local development
- Quality
- Innovation
- Entrepreneurship
- Social inclusion
- (Introduction to) scientific research



TECHNOLOGICAL EDUCATION FIELDS



- Environment and Health
- Food production
- Industrial Process and Control
- Cultural production and design
- Business and Management
- Industrial production
- Information and Communication
- Natural resources
- Infrastructure
- Safety
- Social and Educational Development
- Tourism, hospitality, and leisure



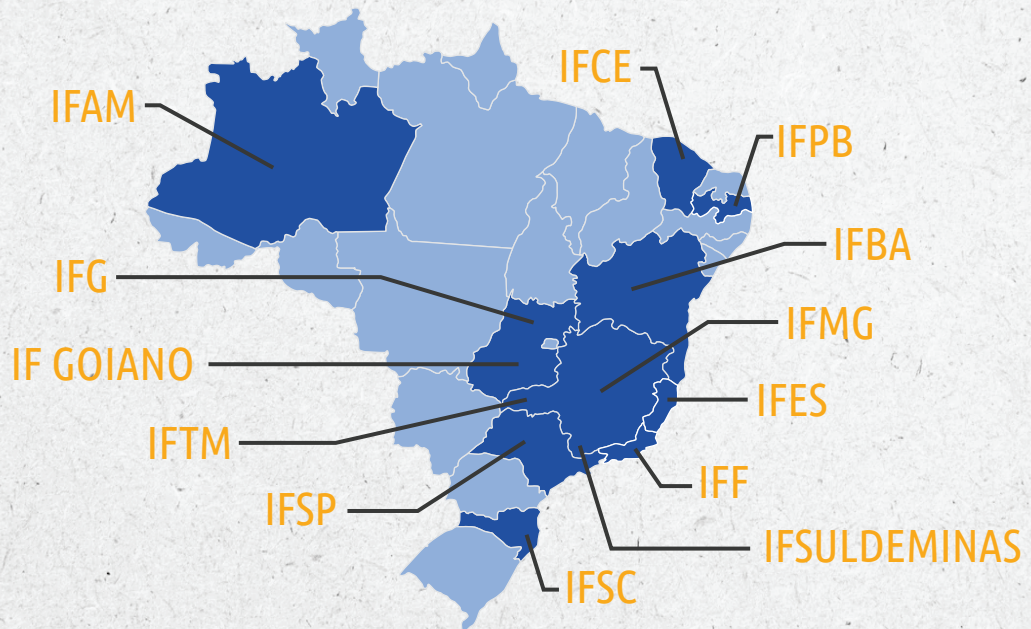


INNOVATION HUBS



In partnership with the Brazilian Agency for Industrial Research and Innovation (Embrapii), the Federal Network has thirteen Innovation Hubs that support Applied research and the expansion of national competitiveness and productivity.

Their projects involve students, faculty, industry professionals, and researchers from Brazil and abroad.





INTERNATIONALIZATION



Conif believes that internationalization is a tool to enhance institutional development and prepare students and staff for a knowledge-based world dynamic.

The Council has chosen as a course of action the strengthening of its participation in international forums and councils, such as the World Federation of Colleges and Polytechnics (WFCP), the Portuguese Polytechnics Coordinating Council (CCISP), the Colombian Association of Higher Education Institutions (ACIET), in addition to solidifying bonds with other entities, including the Community of Portuguese Speaking Countries (CPLP).

Also, since 2016, Conif has been one of the two members of the International Center for Technical and Vocational Education and Training (UNESCO-UNEVOC) in Brazil.

Bilaterally, Conif is expanding relations in South-South cooperation. At the same time, it works side-by-side with countries that are leaders in professional and technological education.

Partnerships with educational institutions from several countries provide students and staff with new experiences through





INTERNATIONALIZATION



academic and professional mobility, knowledge exchange, and intercultural debate.

The Federal Network understands the importance of language policies. Therefore, it has been supporting projects that improve the offer of language teaching courses through teacher training, supporting the development of curricula, and negotiating language courses sponsored by partners, such as the embassies of France, Spain, and the United States.

Last but not least, the Federal Network created the Portuguese as Second Language Program (Programa Português como Língua Adicional – PLA em Rede), which aims to promote the Portuguese language and strengthen the position of its institutions with national and international partners.



Germany, Argentina, Australia, Austria, Belgium, Benin, Bolivia, Cape Verde, Cameroon, Canada, Chile, China, Colombia, Costa Rica, Cuba, Denmark, Egypt, Ecuador, Slovenia, Spain, United States, Estonia, Finland, France, India, Ireland, Israel, Italy, Morocco, Mexico, Mozambique, Norway, Netherlands, Panama, Paraguay, Peru, Poland, Portugal, United Kingdom, Russia, Sudan, Sweden, Switzerland, Suriname, Ukraine and Uruguay.



SCS, quadra 2, bloco D, Edifício Oscar Niemeyer,
térreo, lojas 2 e 3. CEP: 70316-900. Brasília – DF.



(61) 3966-7201



conif@conif.org.br



conif.org



@conif



@conif.official



conifofficial



conif.org

Tradução: João Paulo Rotelli, Conif
Revisão: Flávio Rocha, Instituto Federal do Mato Grosso do Sul.