

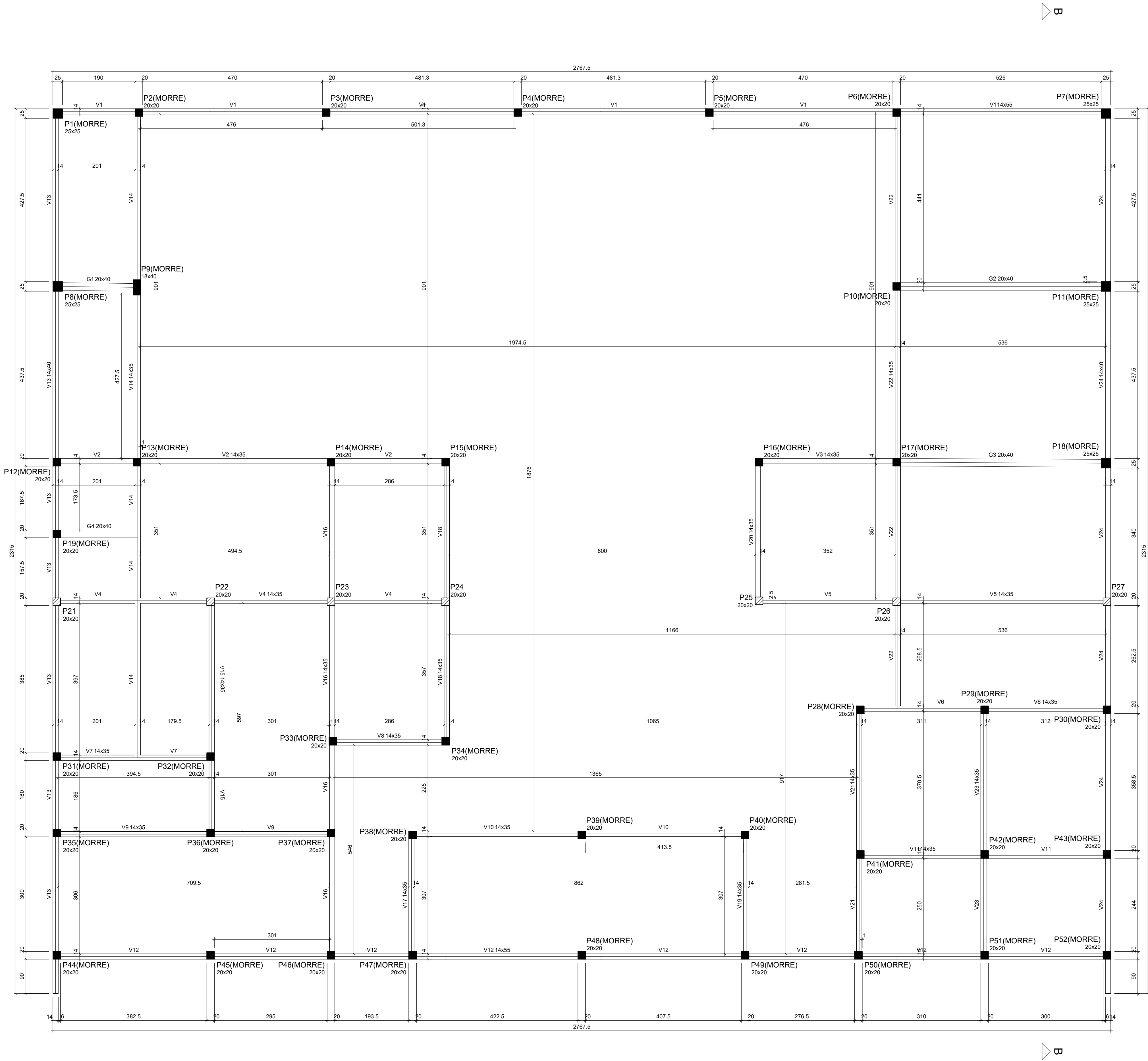
Vigas		
Nome	Seção (cm)	Elevação (cm)
VM1	W410x38.8	-105
VM2	W410x38.8	-105 / -330
VM3	W410x38.8	-105 / -330
VM4	W410x38.8	-105 / -330
VM5	W410x38.8	-105 / -330
VM6	W410x38.8	-105 / -330
VM7	W410x38.8	-105 / -330
VM8	W410x38.8	-105 / -330
VM9	W410x38.8	-105 / -330
VM10	W410x38.8	-105 / -330
VM11	W410x38.8	-105 / -330
VM12	W410x38.8	-105 / -330
VM13	W410x38.8	-105 / -330
VM14	W410x38.8	-105 / -330
VM15	W410x38.8	-105 / -330
VM16	W410x38.8	-105 / -330
VM17	W410x38.8	-105 / -330

Características dos materiais	
fck (kgf/cm²)	Ecs (kgf/cm²)
250	241500

Pilares			
Nome	Seção (cm)	Elevação (cm)	Nível (cm)
P21	20x20	-105	565
P22	20x20	-105	565
P23	20x20	-105	565
P24	20x20	-105	565
P25	20x20	-105	565
P26	20x20	-105	565
P27	20x20	-105	565

Legenda dos pilares	
■	Pilar que morre

Forma do pavimento COBERTURA (Nível 670)
escala 1:50



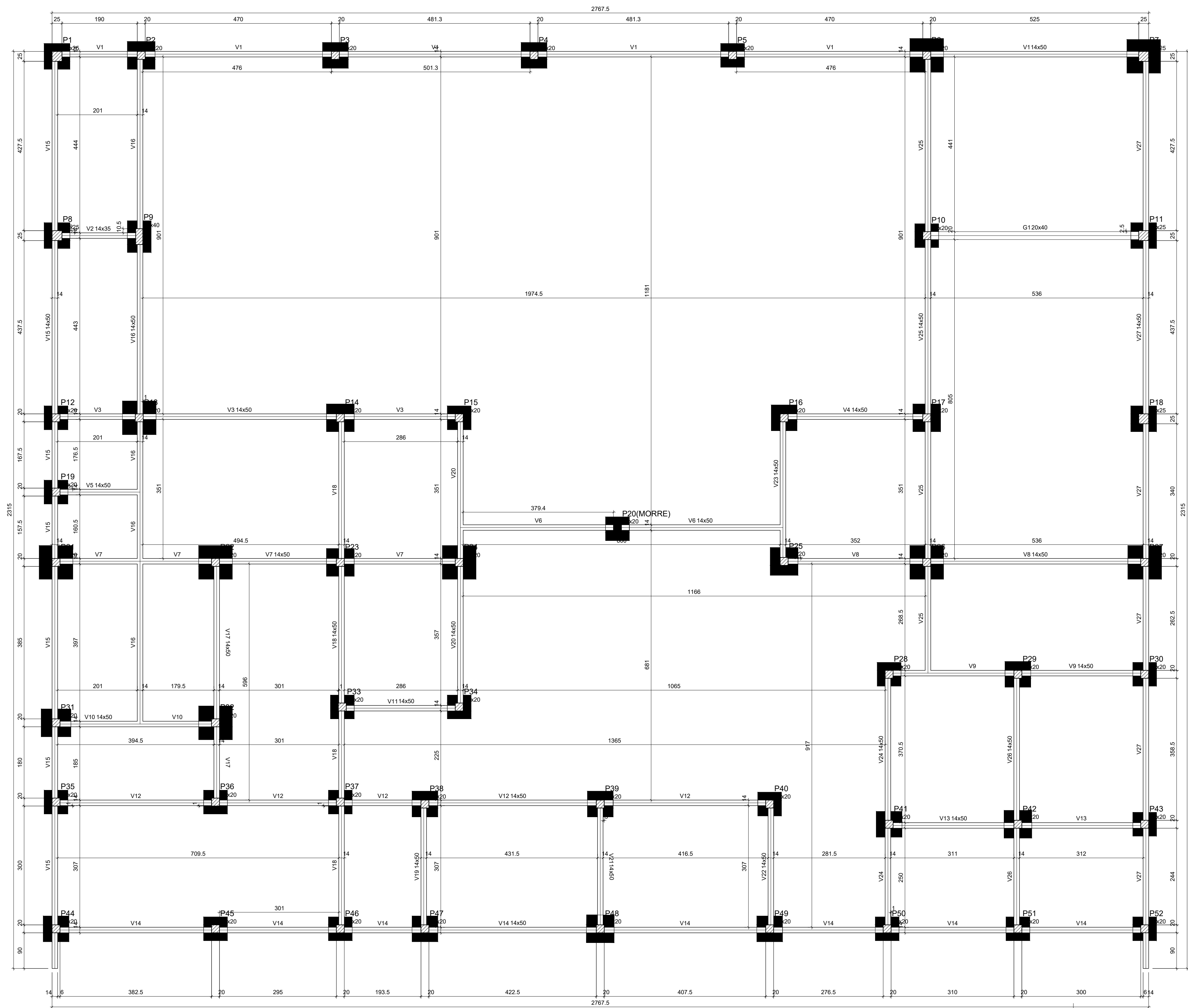
Vigas			
Nome	Seção (cm)	Elevação (cm)	Nível (cm)
G1	20x40	0	340
G2	20x40	0	340
G3	20x40	0	340
G4	20x40	0	340
V1	14x55	0	340
V2	14x35	0	340
V3	14x35	0	340
V4	14x35	0	340
V5	14x35	0	340
V6	14x35	0	340
V7	14x35	0	340
V8	14x35	0	340
V9	14x35	0	340
V10	14x35	0	340
V11	14x35	0	340
V12	14x55	0	340
V13	14x40	0	340
V14	14x35	0	340
V15	14x35	0	340
V16	14x35	0	340
V17	14x35	0	340
V18	14x35	0	340
V19	14x35	0	340
V20	14x35	0	340
V21	14x35	0	340
V22	14x35	0	340
V23	14x35	0	340
V24	14x40	0	340

Características dos materiais		
Íck	Ecs	
250		241500

Pilares			
Nome	Seção (cm)	Elevação (cm)	Nível (cm)
P1	25x25	0	340
P2	20x20	0	340
P3	20x20	0	340
P4	20x20	0	340
P5	20x20	0	340
P6	20x20	0	340
P7	25x25	0	340
P8	25x25	0	340
P9	18x40	0	340
P10	20x20	0	340
P11	25x25	0	340
P12	20x20	0	340
P13	20x20	0	340
P14	20x20	0	340
P15	20x20	0	340
P16	20x20	0	340
P17	20x20	0	340
P18	25x25	0	340
P19	20x20	0	340
P20	20x20	0	340
P21	20x20	0	340
P22	20x20	0	340
P23	20x20	0	340
P24	20x20	0	340
P25	20x20	0	340
P26	20x20	0	340
P27	20x20	0	340
P28	20x20	0	340
P29	20x20	0	340
P30	20x20	0	340
P31	20x20	0	340
P32	20x20	0	340
P33	20x20	0	340
P34	20x20	0	340
P35	20x20	0	340
P36	20x20	0	340
P37	20x20	0	340
P38	20x20	0	340
P39	20x20	0	340
P40	20x20	0	340
P41	20x20	0	340
P42	20x20	0	340
P43	20x20	0	340
P44	20x20	0	340
P45	20x20	0	340
P46	20x20	0	340
P47	20x20	0	340
P48	20x20	0	340
P49	20x20	0	340
P50	20x20	0	340
P51	20x20	0	340
P52	20x20	0	340

Legenda dos pilares	
	Pilar que morre
	Pilar que passa

Forma do pavimento 1 PAVIMENTO (Nível 340)
escala 1:50



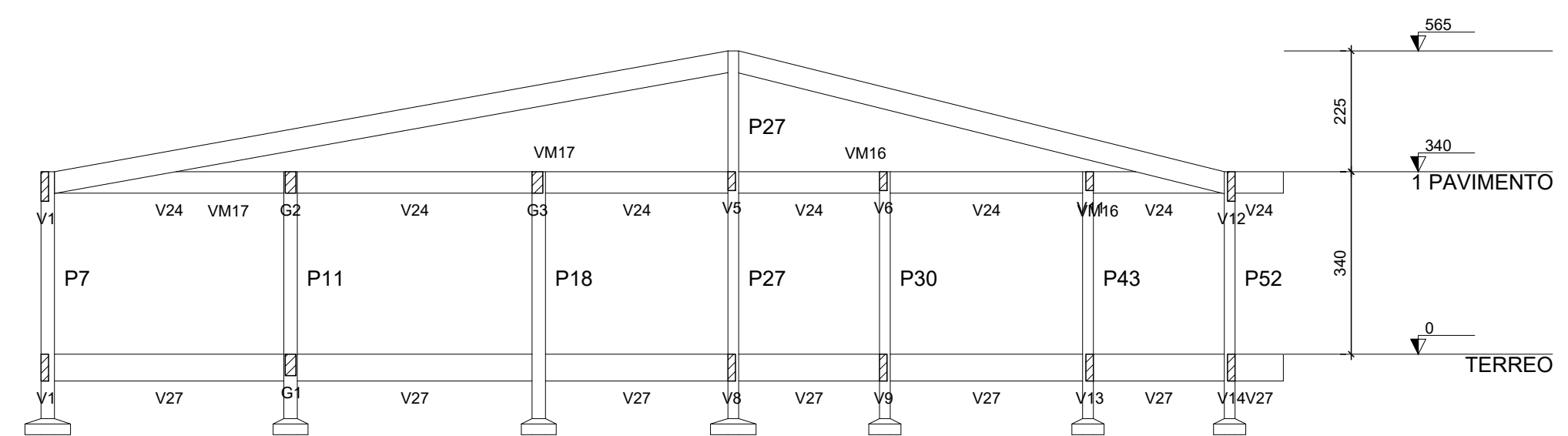
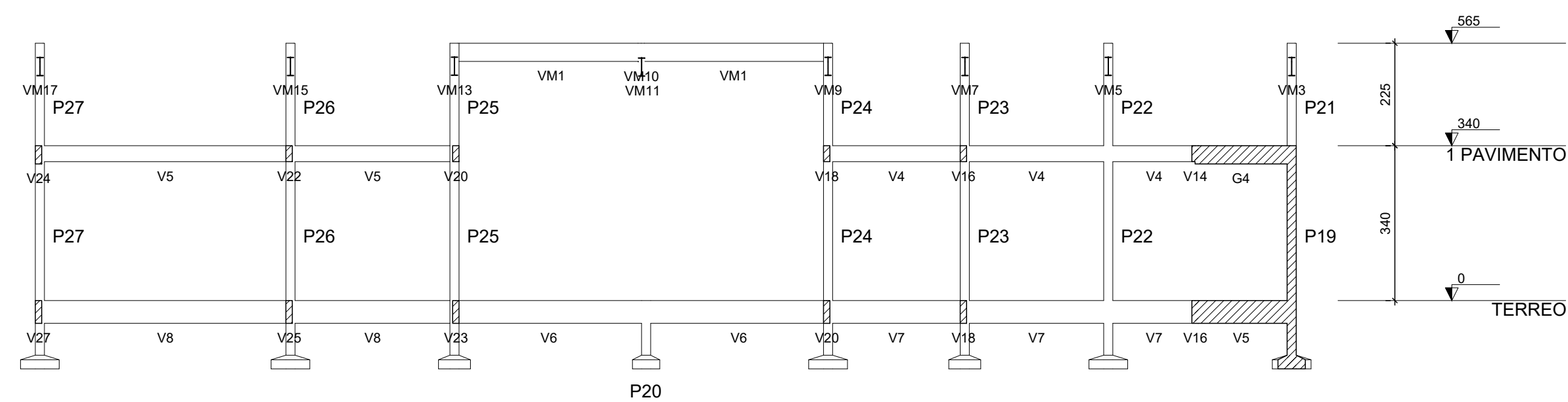
Nome	Vigas		
	Seção (cm)	Elevação (cm)	Nível (cm)
G1	20x40	0	0
V1	14x50	0	0
V2	14x35	0	0
V3	14x50	0	0
V4	14x50	0	0
V5	14x50	0	0
V6	14x50	0	0
V7	14x50	0	0
V8	14x50	0	0
V9	14x50	0	0
V10	14x50	0	0
V11	14x50	0	0
V12	14x50	0	0
V13	14x50	0	0
V14	14x50	0	0
V15	14x50	0	0
V16	14x50	0	0
V17	14x50	0	0
V18	14x50	0	0
V19	14x50	0	0
V20	14x50	0	0
V21	14x50	0	0
V22	14x50	0	0
V23	14x50	0	0
V24	14x50	0	0
V25	14x50	0	0
V26	14x50	0	0
V27	14x50	0	0

Características dos materiais		
fck (kgf/cm²)	Ecs (kgf/cm²)	
250	241500	

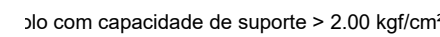
Nome	Pilares		
	Seção (cm)	Elevação (cm)	Nível (cm)
P1	25x25	0	0
P2	20x20	0	0
P3	20x20	0	0
P4	20x20	0	0
P5	20x20	0	0
P6	20x20	0	0
P7	25x25	0	0
P8	25x25	0	0
P9	18x40	0	0
P10	20x20	0	0
P11	25x25	0	0
P12	20x20	0	0
P13	20x20	0	0
P14	20x20	0	0
P15	20x20	0	0
P16	20x20	0	0
P17	20x20	0	0
P18	25x25	0	0
P19	20x20	0	0
P20	20x20	0	0
P21	20x20	0	0
P22	20x20	0	0
P23	20x20	0	0
P24	20x20	0	0
P25	20x20	0	0
P26	20x20	0	0
P27	20x20	0	0
P28	20x20	0	0
P29	20x20	0	0
P30	20x20	0	0
P31	20x20	0	0
P32	20x20	0	0
P33	20x20	0	0
P34	20x20	0	0
P35	20x20	0	0
P36	20x20	0	0
P37	20x20	0	0
P38	20x20	0	0
P39	20x20	0	0
P40	20x20	0	0
P41	20x20	0	0
P42	20x20	0	0
P43	20x20	0	0
P44	20x20	0	0
P45	20x20	0	0
P46	20x20	0	0
P47	20x20	0	0
P48	20x20	0	0
P49	20x20	0	0
P50	20x20	0	0
P51	20x20	0	0
P52	20x20	0	0

Legenda dos pilares	
	Pilar que morre
	Pilar que passa

Forma do pavimento TERREO (Nível 0)
escala 1:50



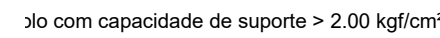
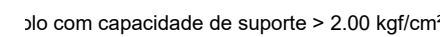
	MINISTÉRIO DA EDUCAÇÃO INSTITUTO FEDERAL DE EDUCAÇÃO, CIÊNCIA E TECNOLOGIA PROREITORIA DE DESENVOLVIMENTO INSTITUCIONAL DIRETORIA DE INFRAESTRUTURA		
<h2 style="margin: 0;">PROJETO EXECUTIVO ESTRUTURAL</h2>			
APROVAÇÃO CORPO DE BOMBEIROS <hr style="width: 50%; margin-left: 0;"/>	APROVAÇÃO PREFEITURA MUNICIPAL <hr style="width: 50%; margin-left: 0;"/>		
RESPONSÁVEL TÉCNICO <hr style="width: 50%; margin-left: 0;"/>	INSTITUTO FEDERAL DO PAULISTA <hr style="width: 50%; margin-left: 0;"/>		
Outra: CONSTRUÇÃO CAMPUS 2024	Endereço: 		
Conteúdo da prancha: XXXXXXXX			
Responsável Técnico:			
Op. de CAD:	Data:	Escala: indicada	Revisão: FINAL

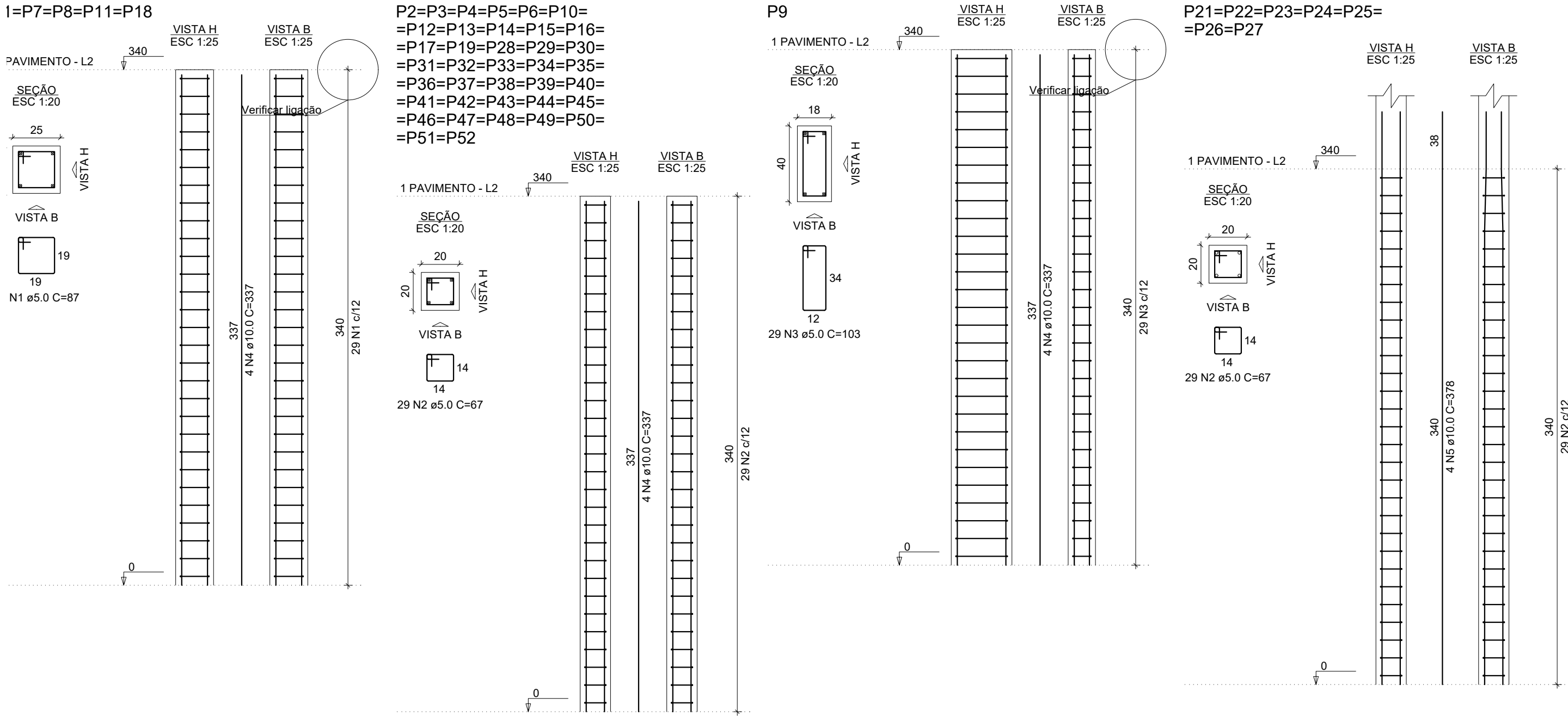


10	10.0	204	Y
11	10.0	4	Y

CA60	10.0	418.5
	5.0	470.6

Área de forma = 79.61 m²





RELAÇÃO DO AÇO

5xP1
7xP21

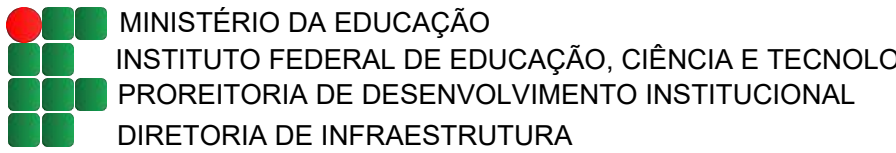
38xP2

AÇO	N	DIAM (mm)	QUANT
CA60	1	5.0	145
	2	5.0	1305
	3	5.0	29
CA50	4	10.0	176
	5	10.0	28

RESUMO DO AÇO

AÇO	DIAM (mm)	C.TOTAL (m)
CA50	10.0	699
CA60	5.0	1030.4
PESO TOTAL (kg)		
CA50	474	
CA60	174.7	

Volume de concreto (C-25) = 7.43 m³
Área de forma = 143.34 m²



PROJETO EXECUTIVO ESTRUTURAL

APROVAÇÃO CORPO DE BOMBEIROS

APROVAÇÃO PREFEITURA MUNICIPAL

RESPONSÁVEL TÉCNICO

INSTITUTO FEDERAL DO PAUÍ

Outro:

CONSTRUÇÃO CAMPUS 2024

Endereço:

Conteúdo da prancha: XXXXXXXX

Responsável Técnico:

Op. de CAD:

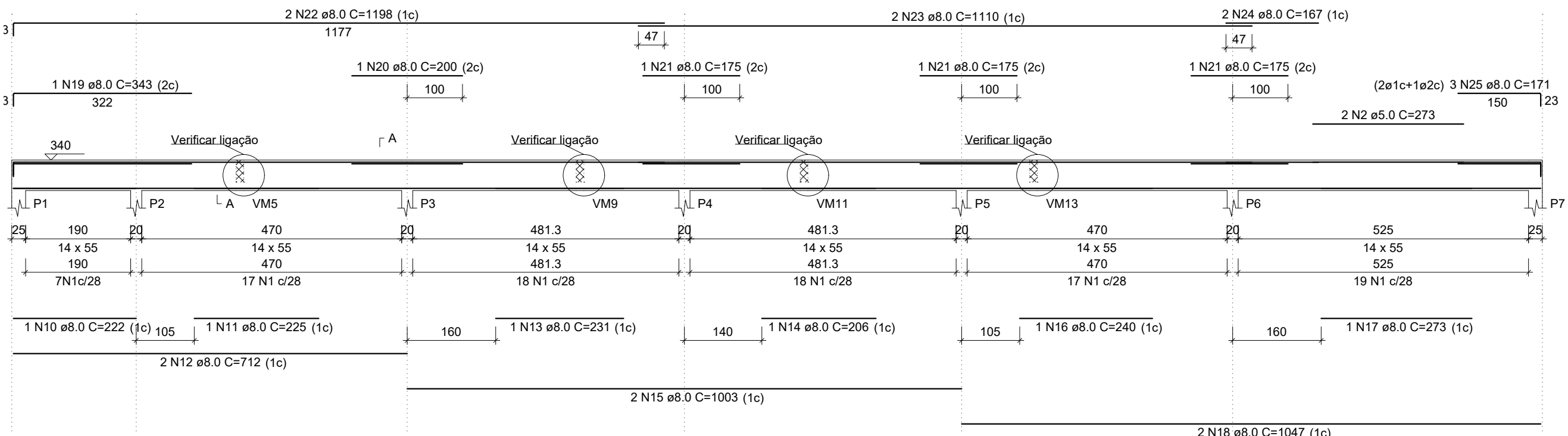
Data:

Escala:

Revisão: FINAL

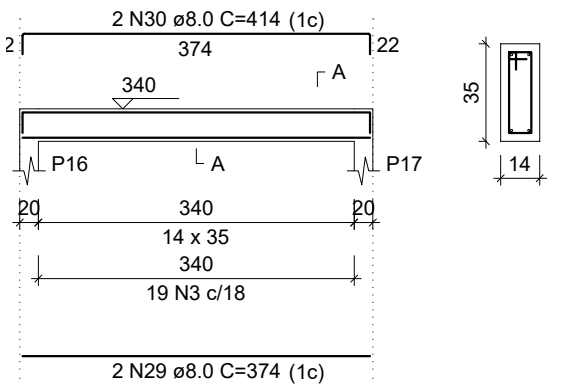
V1

ESC 1:75



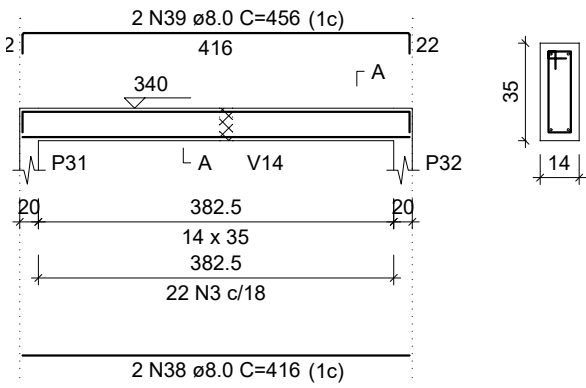
V3

ESC 1:75



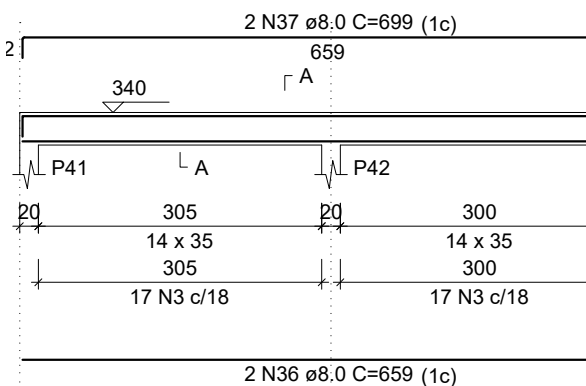
V7

ESC 1:75



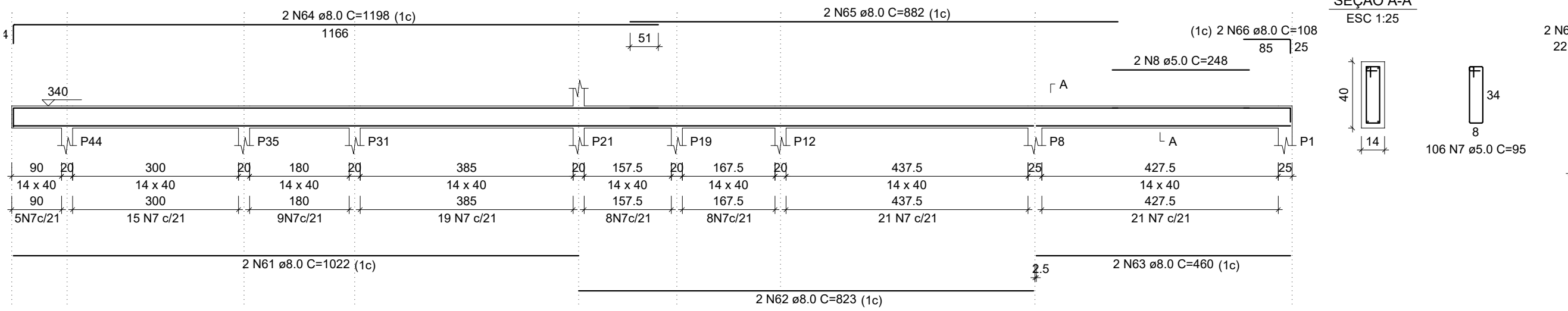
V11

ESC 1:75



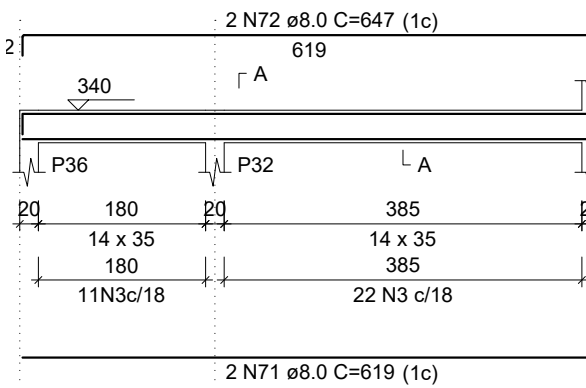
V13

ESC 1:75



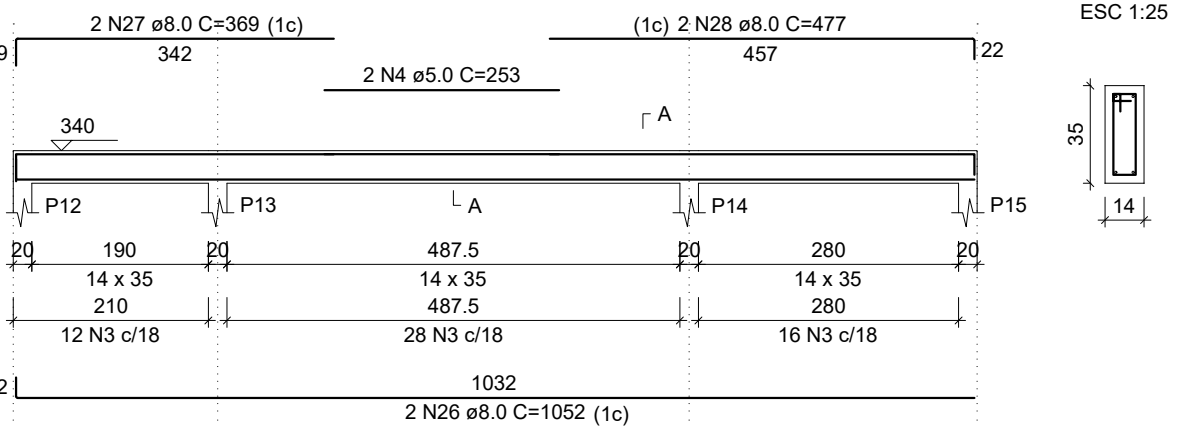
V15

ESC 1:75



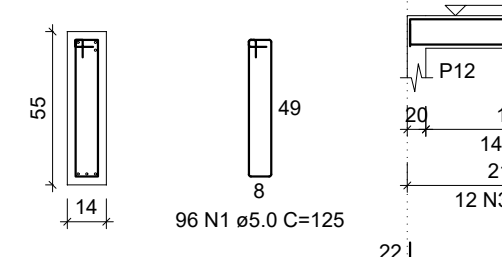
V2

ESC 1:75



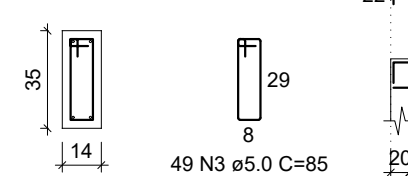
SEÇÃO A-A

ESC 1:25



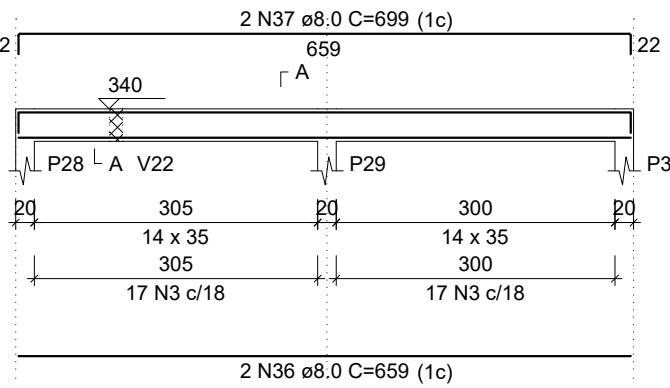
SEÇÃO A-A

ESC 1:25



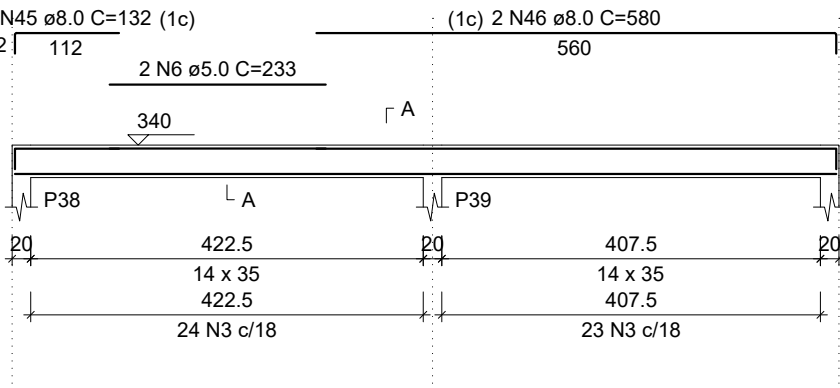
V6

ESC 1:75



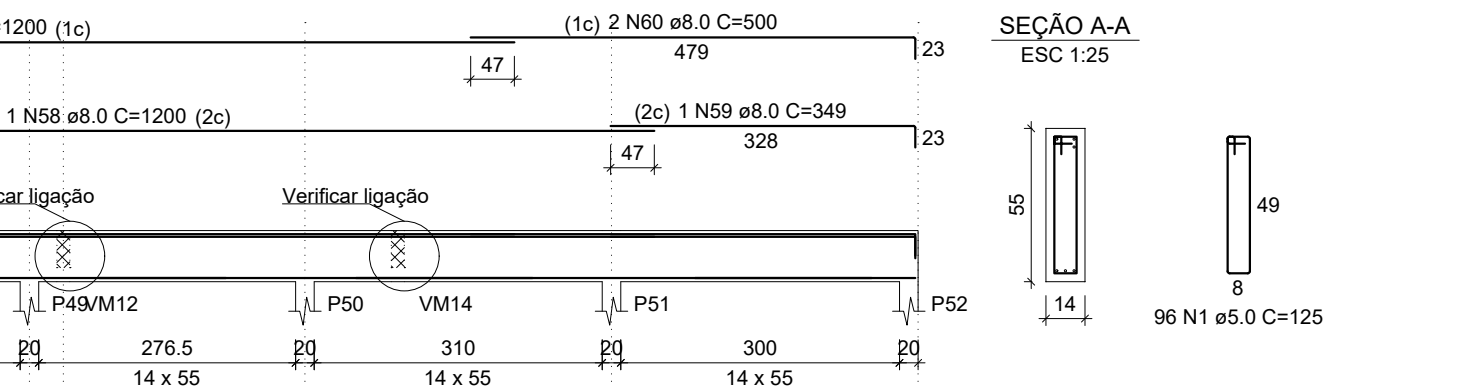
V10

ESC 1:75



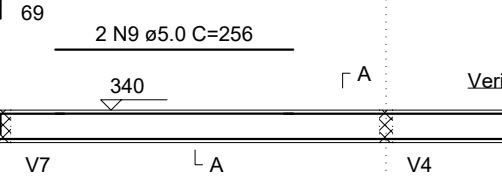
V14

ESC 1:75



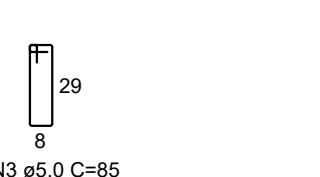
SEÇÃO A-A

ESC 1:25



SEÇÃO A-A

ESC 1:25



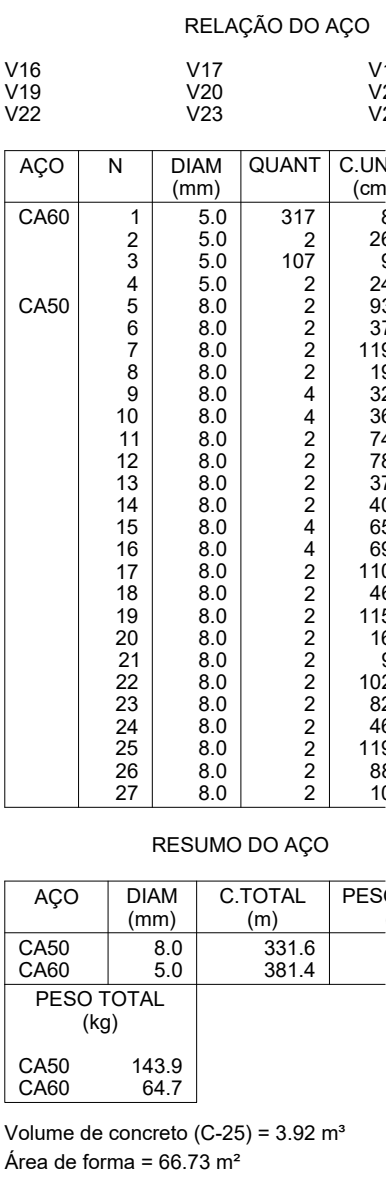
RELAÇÃO DO

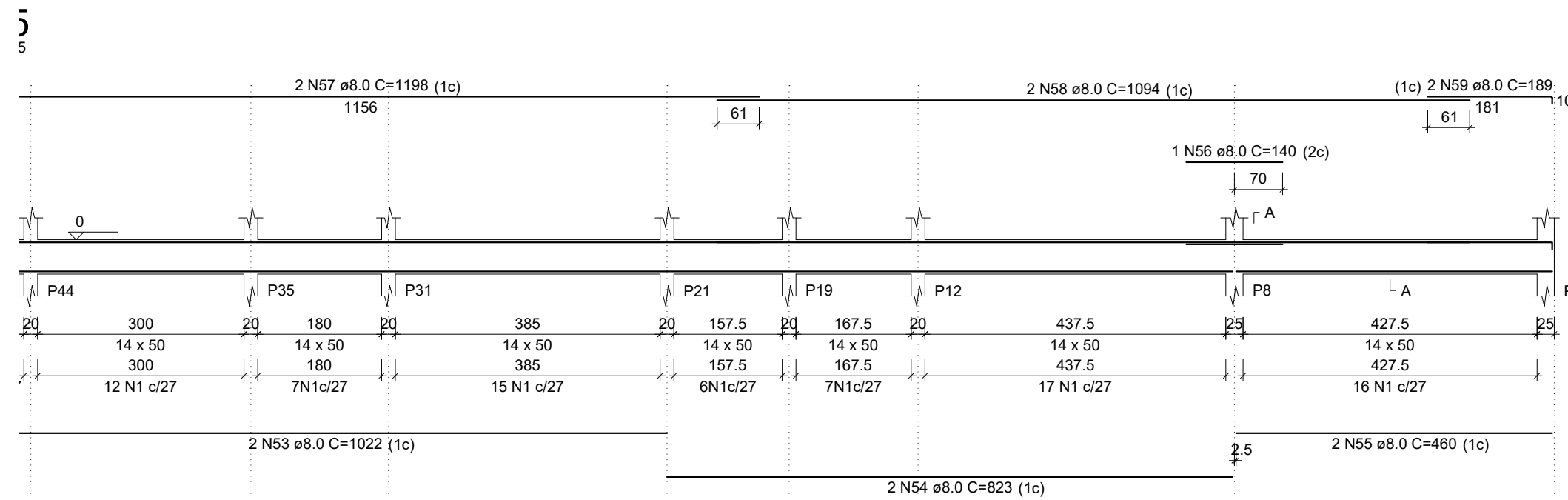
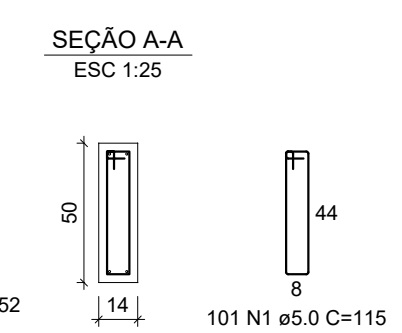
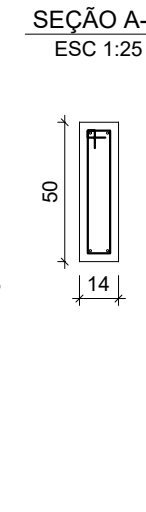
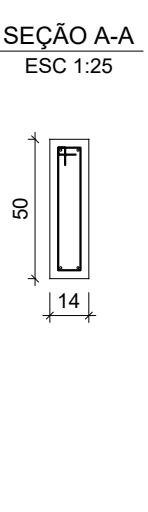
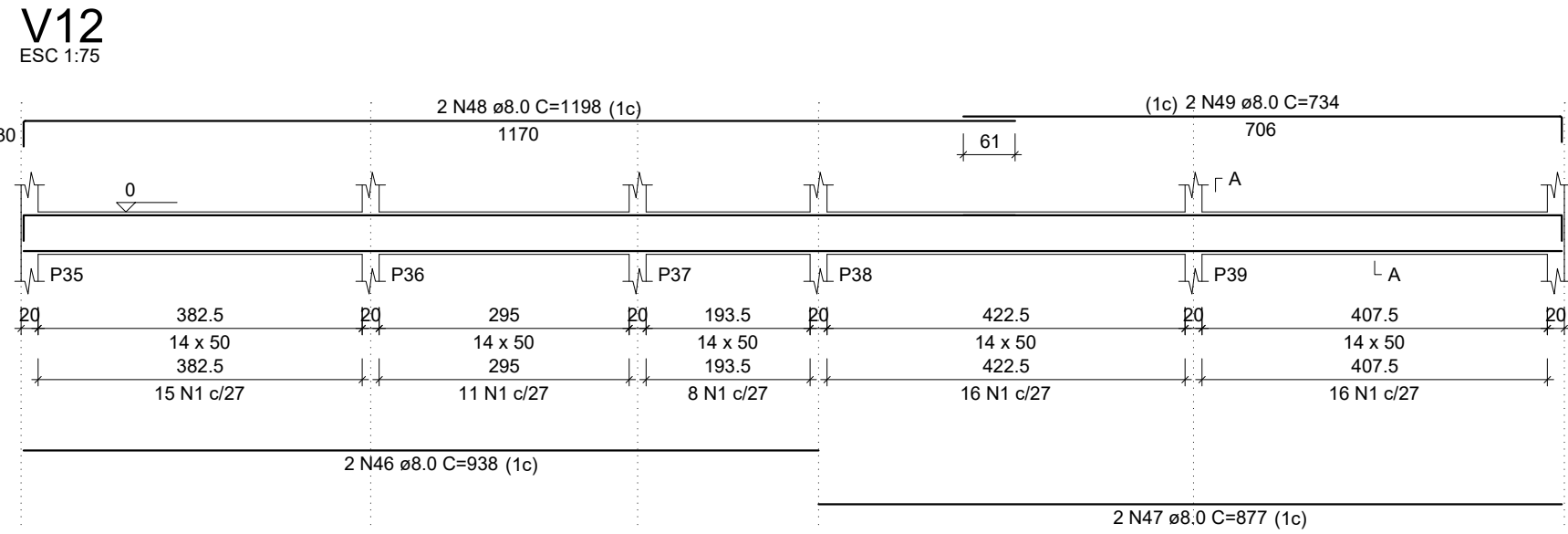
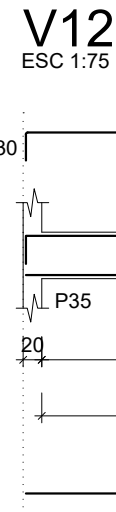
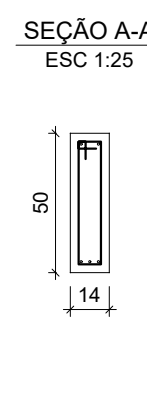
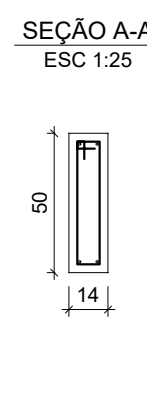
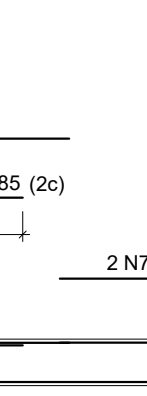
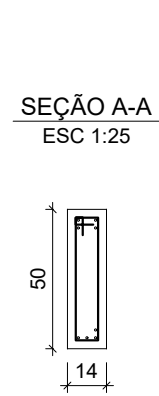
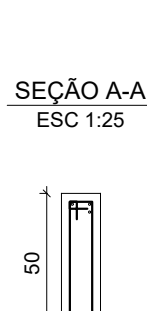
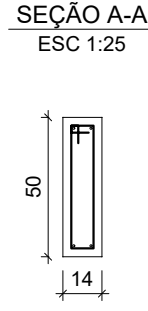
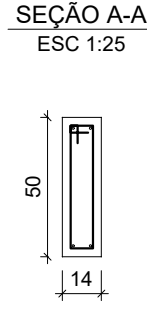
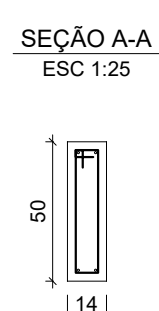
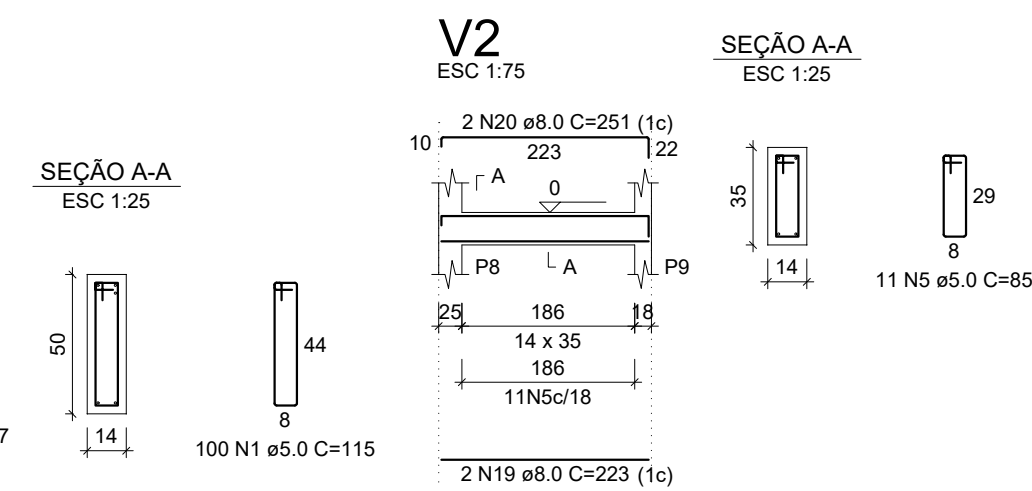
AÇO	N	DIAM (mm)	QUANT
CA60	1	5.0	192
	2	5.0	2
	3	5.0	495
	4	5.0	2
	5	5.0	2
	6	5.0	2
	7	5.0	106
	8	5.0	2
	9	5.0	2
	10	8.0	1
	11	8.0	1
	12	8.0	2
	13	8.0	1
	14	8.0	1
	15	8.0	2
	16	8.0	1
	17	8.0	1
	18	8.0	2
	19	8.0	1
	20	8.0	1
	21	8.0	3
	22	8.0	4
	23	8.0	2
	24	8.0	2
	25	8.0	3
	26	8.0	2
	27	8.0	2
	28	8.0	2
	29	8.0	2
	30	8.0	2
	31	8.0	2
	32	8.0	2
	33	8.0	2
	34	8.0	2
	35	8.0	2
	36	8.0	2
	37	8.0	4
	38	8.0	2
	39	8.0	2
	40	8.0	2
	41	8.0	2
	42	8.0	2
	43	8.0	2
	44	8.0	2
	45	8.0	2
	46	8.0	2
	47	8.0	2
	48	8.0	1
	49	8.0	1
	50	8.0	2
	51	8.0	1
	52	8.0	1
	53	8.0	2
	54	8.0	2
	55	8.0	2
	56	8.0	1
	57	8.0	1
	58	8.0	5
	59	8.0	1
	60	8.0	2
	61	8.0	2
	62	8.0	2
	63	8.0	2
	64	8.0	2
	65	8.0	2
	66	8.0	2
	67	8.0	2
	68	8.0	2
	69	8.0	2
	70	8.0	2
	71	8.0	2
	72	8.0	2

RESUMO DO AÇO

AÇO	DIAM (mm)	C.TOTAL (m)
CA50	8.0	742
CA60	5.0	792.3
PESO TOTAL (kg)		
CA50		322.1
CA60		134.3

Volume de concreto (C-25) = 9.46
Área de forma = 157.64 m²

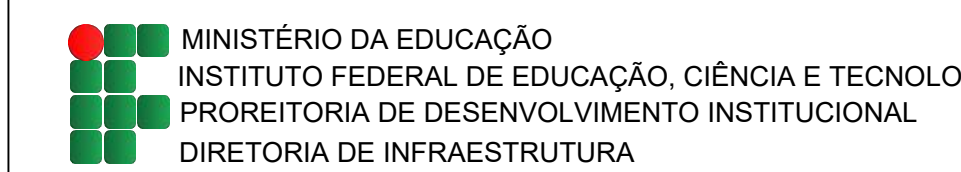




RELAÇÃO DO AÇO					
V1		V2		V3	
V4		V5		V6	
V7		V8		V9	
V10		V11		V12	
V13		V14		V15	
CAÇO	N	DIAM	QUNT	CUNIT	
CASO 0	3	5,0	584	115	115
	2	5,0	2	220	220
	3	5,0	2	271	271
	4	5,0	2	253	253
	5	5,0	11	85	85
	6	5,0	2	233	233
	7	5,0	2	270	270
	8	8,0	2	1003	1003
	9	8,0	2	1147	1147
	10	8,0	2	365	365
	11	8,0	1	190	190
	12	8,0	2	305	305
	13	8,0	2	175	175
	14	8,0	1	165	165
	15	8,0	2	187	187
	16	8,0	2	148	148
	17	8,0	2	231	231
	18	8,0	2	351	351
	19	8,0	2	1003	1003
	20	8,0	2	275	275
	21	8,0	2	500	500
	22	8,0	2	374	374
	23	8,0	2	430	430
	24	8,0	2	230	230
	25	8,0	2	822	822
	26	8,0	2	200	200
	27	8,0	3	293	293
	28	8,0	2	878	878
	29	8,0	1	198	198
	30	8,0	2	243	243
	31	8,0	2	1040	1040
	32	8,0	2	1088	1088
	33	8,0	2	624	624
	34	8,0	2	1550	1550
	35	8,0	2	180	180
	36	8,0	1	719	719
	37	8,0	4	659	659
	38	8,0	4	515	515
	39	8,0	4	734	734
	40	8,0	1	202	202
	41	8,0	2	416	416
	42	8,0	2	472	472
	43	8,0	2	398	398
	44	8,0	2	365	365
	45	8,0	2	935	935
	46	8,0	2	777	777
	47	8,0	4	1198	1198
	48	8,0	4	734	734
	49	8,0	2	1167	1167
	50	8,0	2	657	657
	51	8,0	2	1022	1022
	52	8,0	2	823	823
	53	8,0	2	460	460
	54	8,0	1	140	140
	55	8,0	2	1198	1198
	56	8,0	2	1094	1094
	57	8,0	2	189	189

AÇO	DIAM (mm)	C.TOTAL (m)	PESO (kg)
CA50	8.0	675	
CA60	5.0	704.9	
PESO TOTAL (kg)			
CA50	293		
CA60	119.5		

Volume de concreto (C-25) = 10.62 m³
Área de forma = 172.93 m²



PROJETO EXECUTIVO ESTRUTURAL

APROVAÇÃO CORPO DE BOMBEIROS

APROVAÇÃO PREFEITURA MUNICIPAL

RESPONSÁVEL TÉCNICO

INSTITUTO FEDERAL DO RIO DE JANEIRO

Obra:

10

Conteúdo da prancha

[illegible]

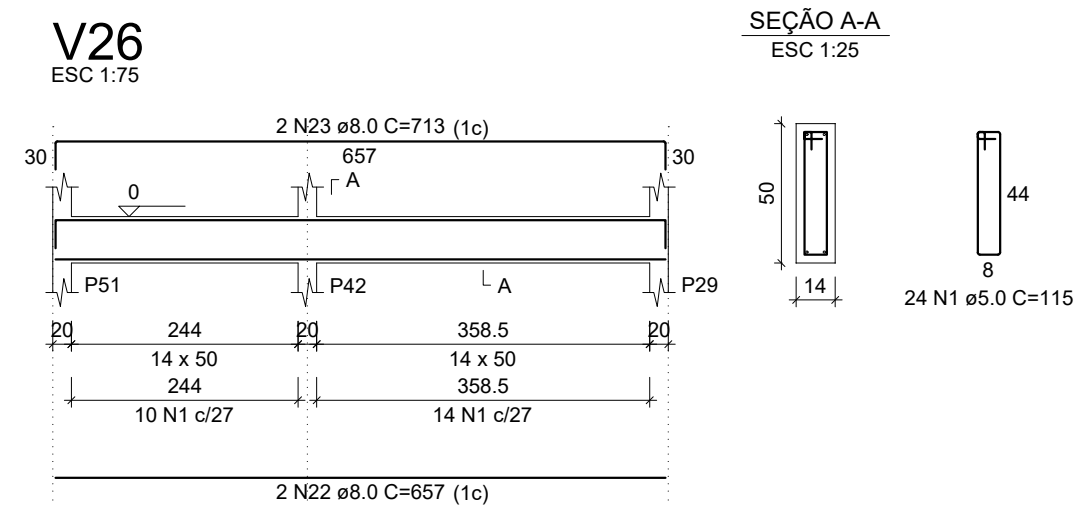
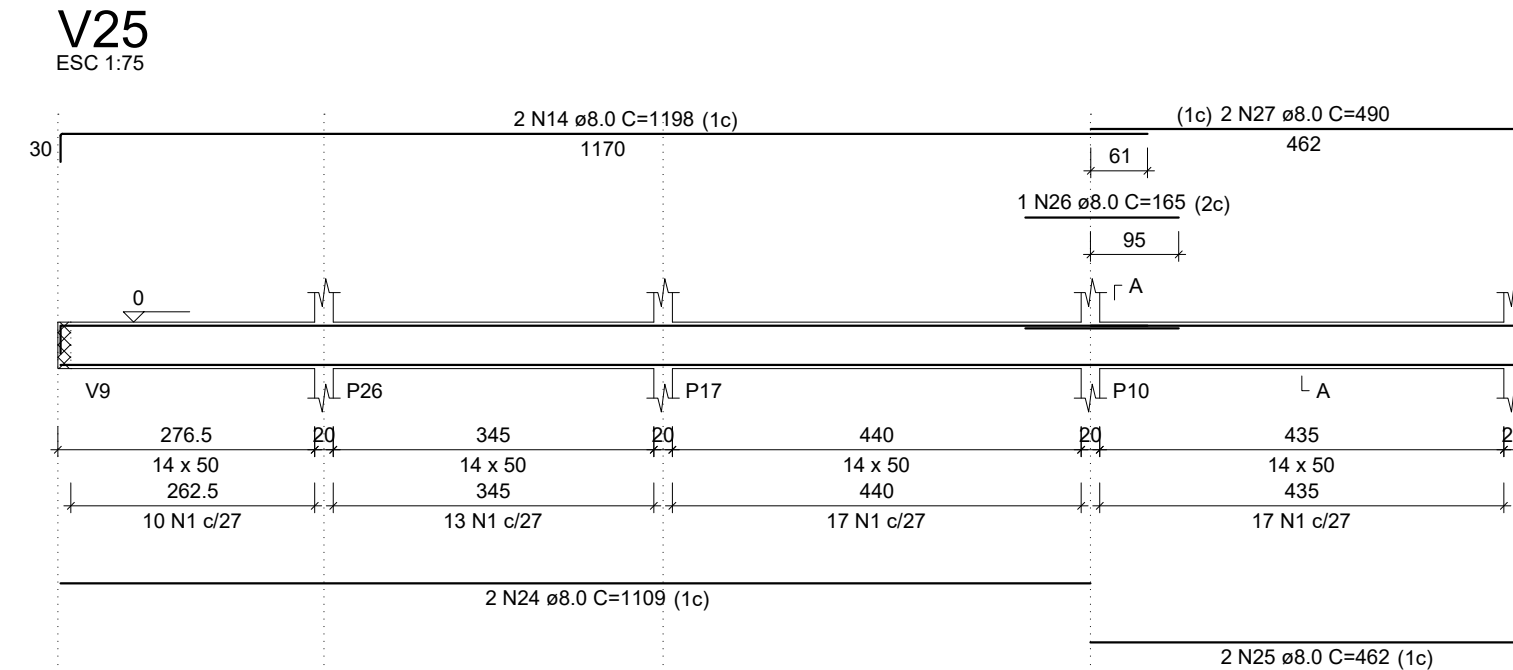
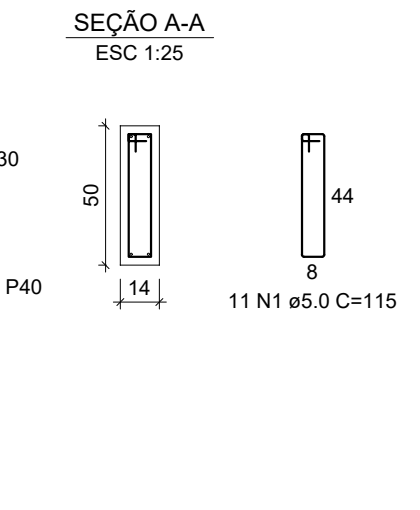
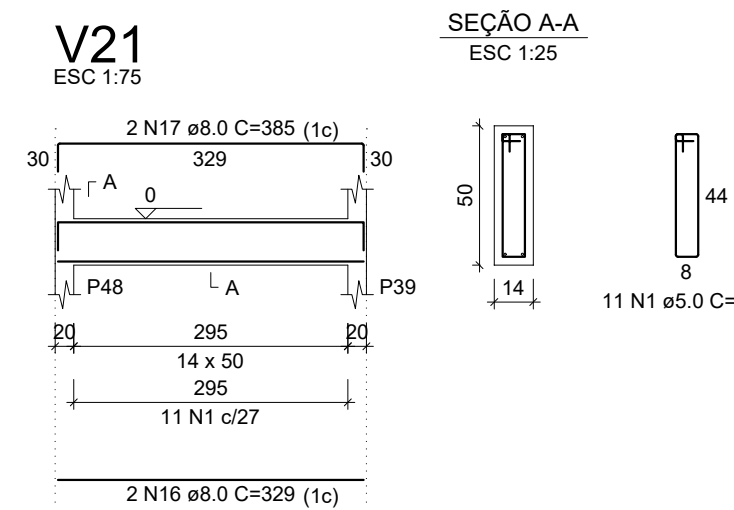
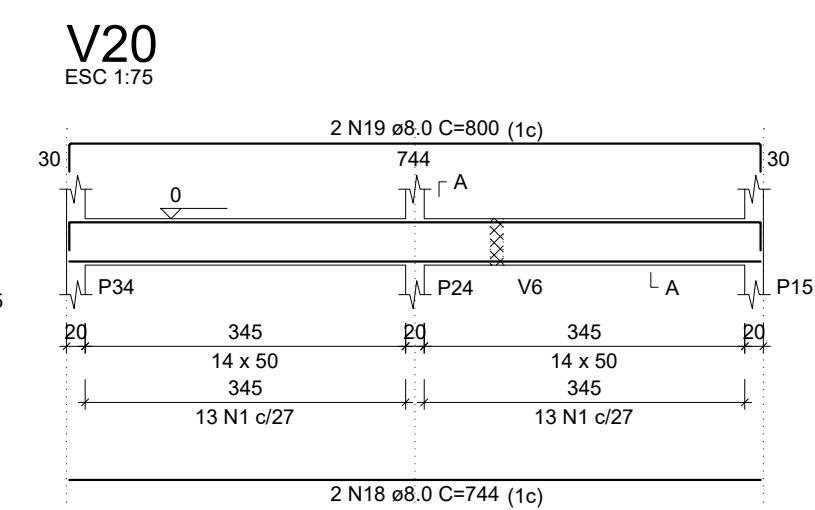
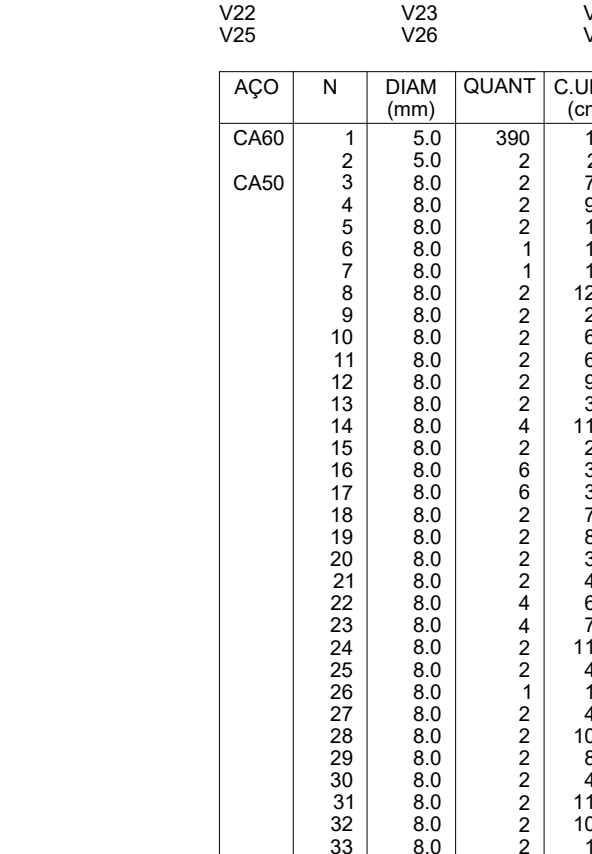
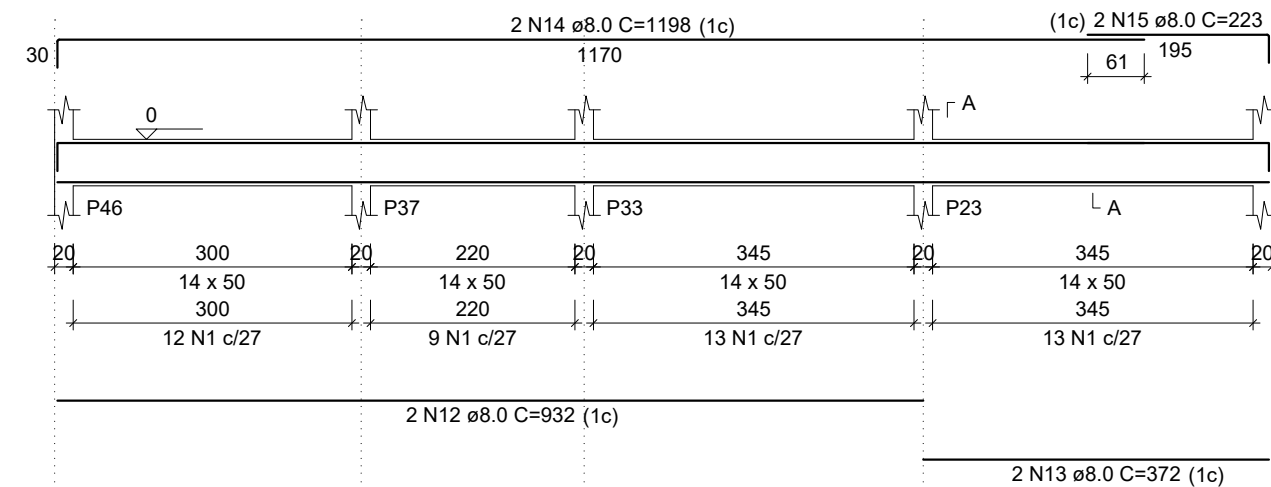
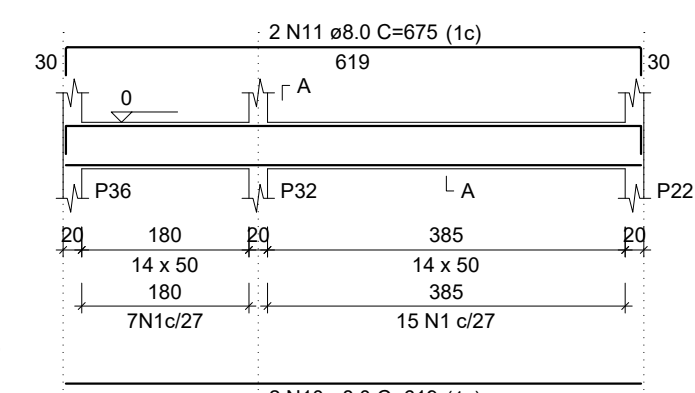
Responsável Técnico	
---------------------	--

Op. de CAD:

Data:	
-------	--

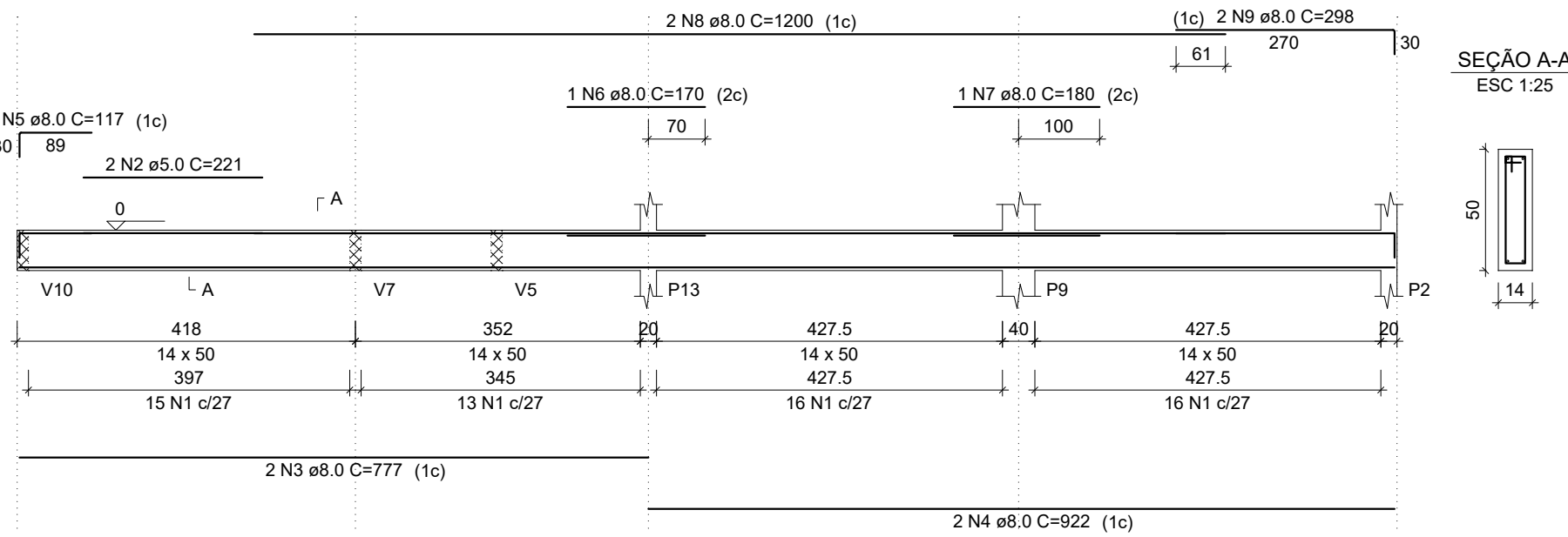
Escala:

Revisão:

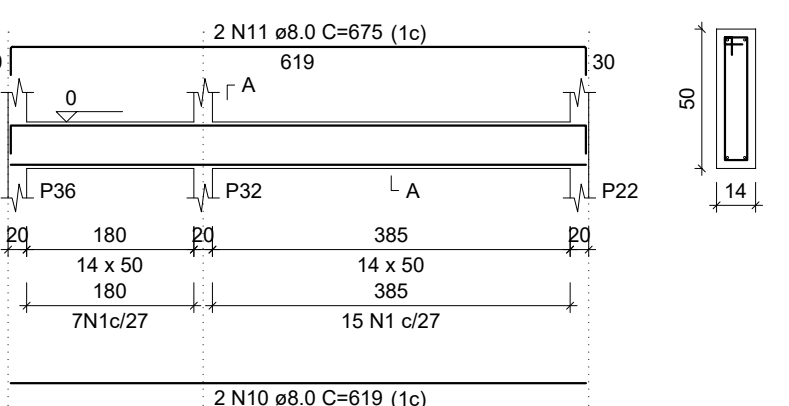


Volume de concreto (C-25) = 7.12 m³
Área de forma = 115.96 m²

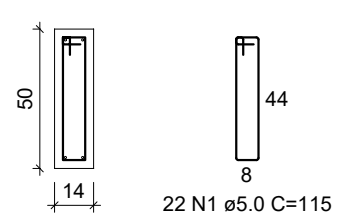
V16
ESC 1:75



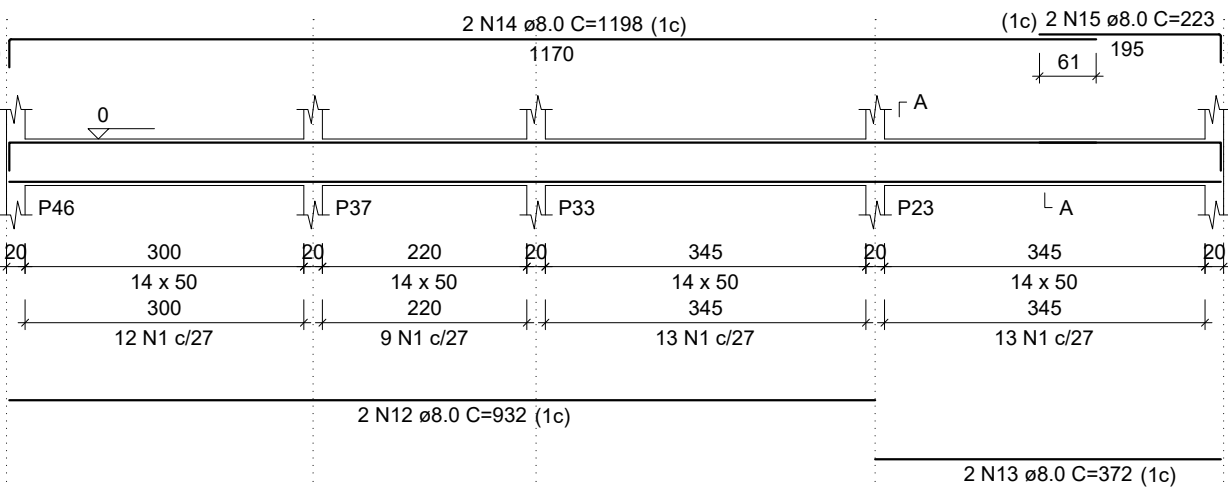
V17
ESC 1:75



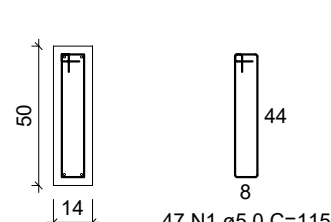
SEÇÃO A-A
ESC 1:25



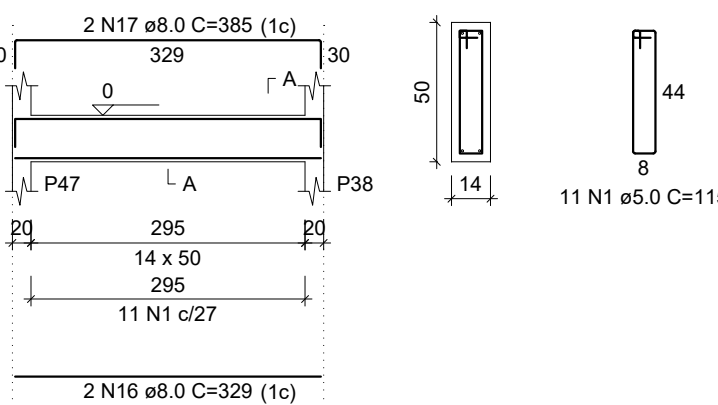
V18
ESC 1:75



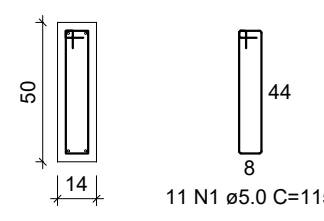
SEÇÃO A-A
ESC 1:25



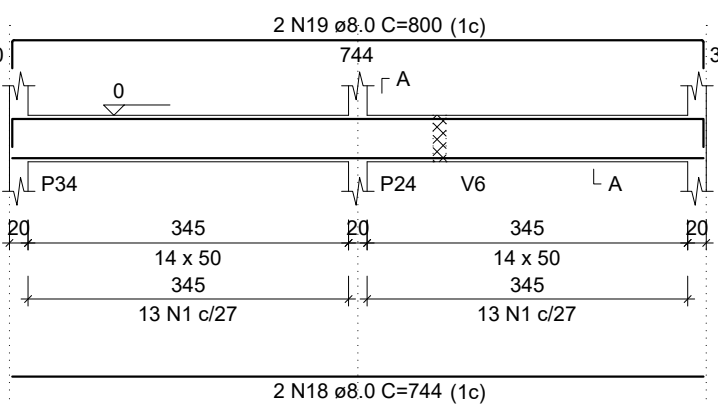
V19
ESC 1:75



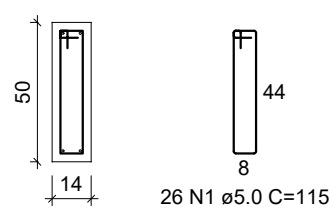
SEÇÃO A-A
ESC 1:25



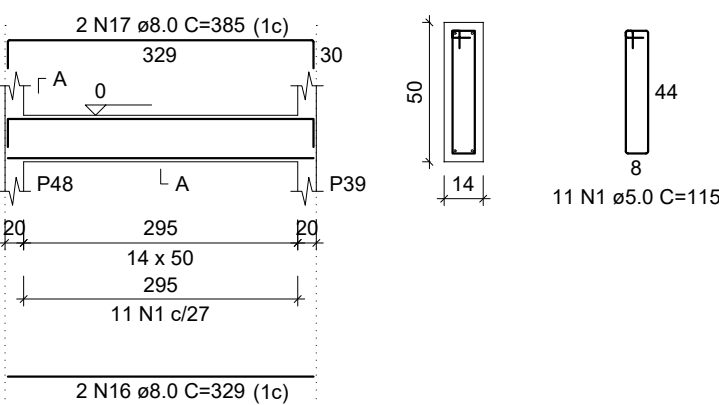
V20
ESC 1:75



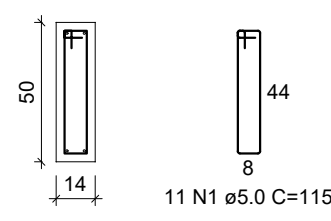
SEÇÃO A-A
ESC 1:25



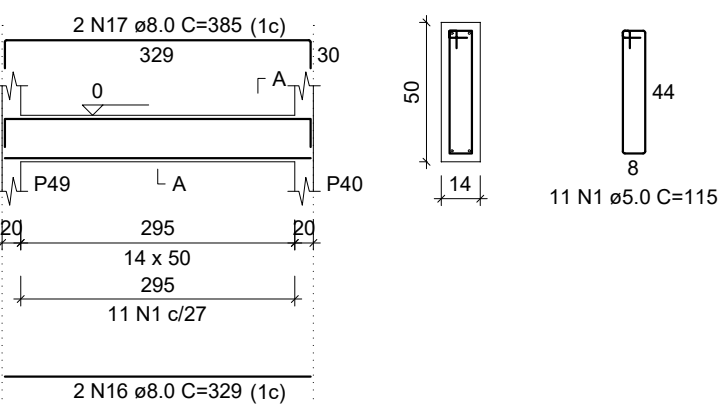
V21
ESC 1:75



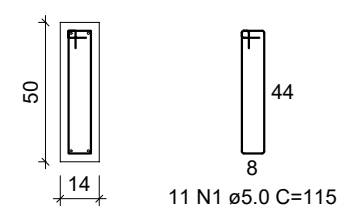
SEÇÃO A-A
ESC 1:25



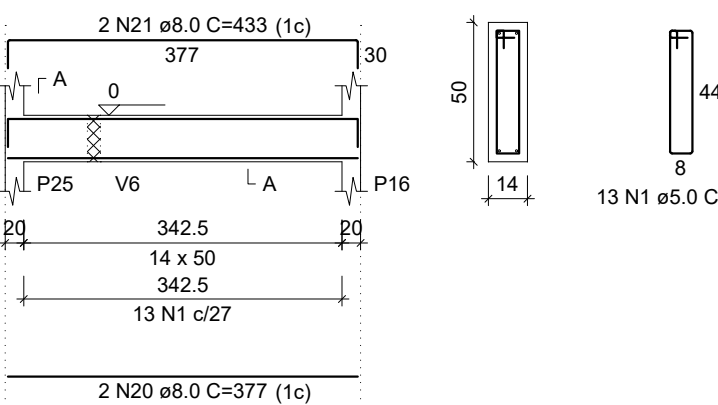
V22
ESC 1:75



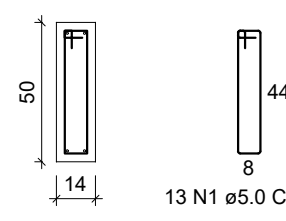
SEÇÃO A-A
ESC 1:25



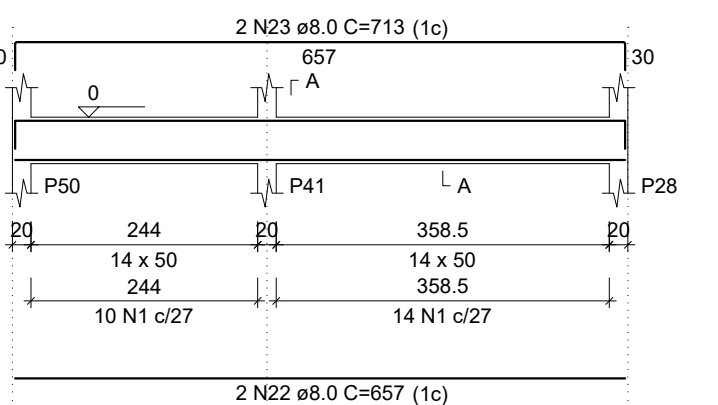
V23
ESC 1:75



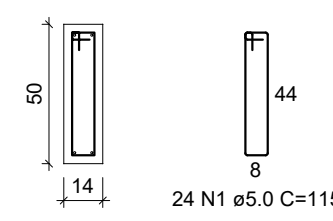
SEÇÃO A-A
ESC 1:25



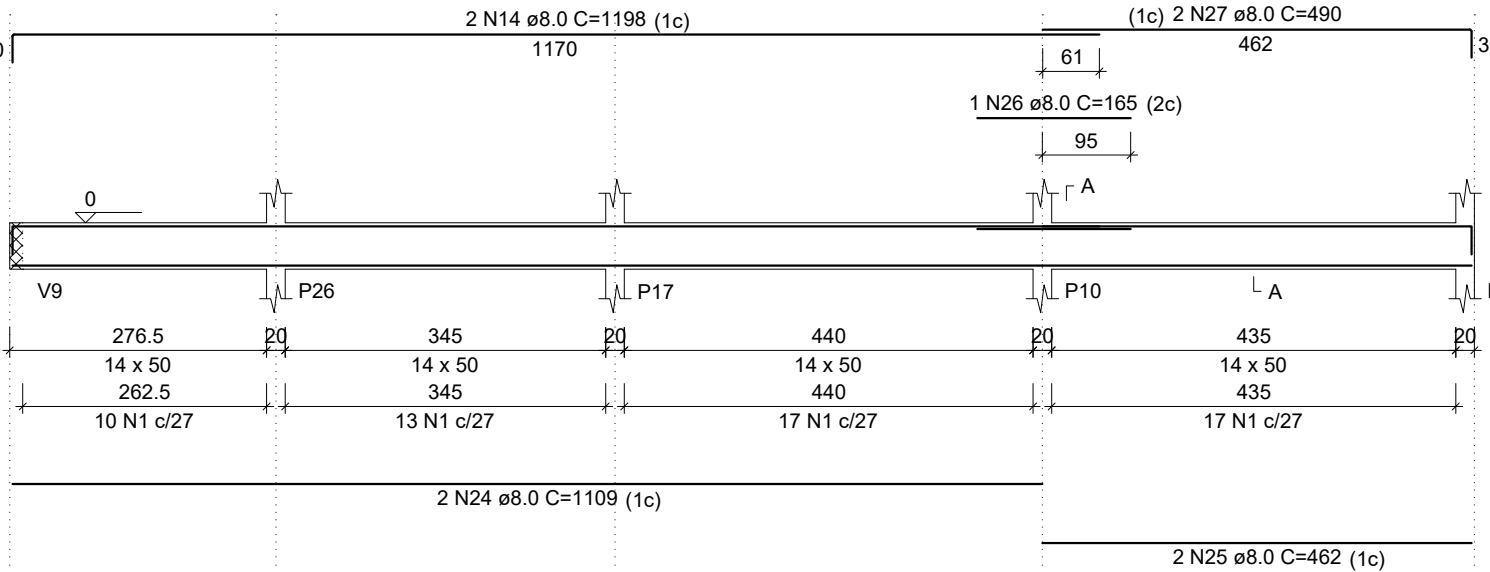
V24
ESC 1:75



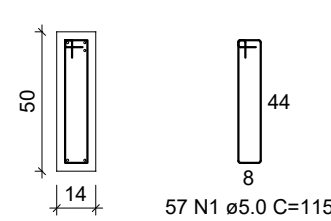
SEÇÃO A-A
ESC 1:25



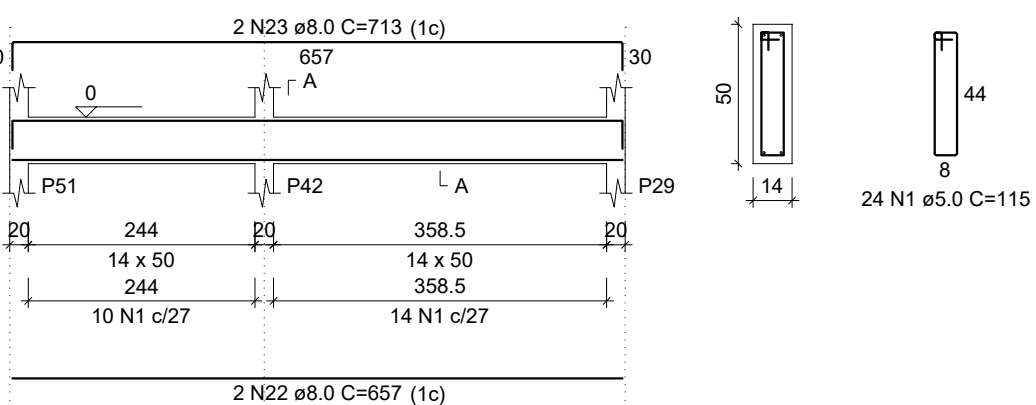
V25
ESC 1:75



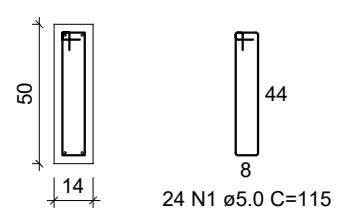
SEÇÃO A-A
ESC 1:25



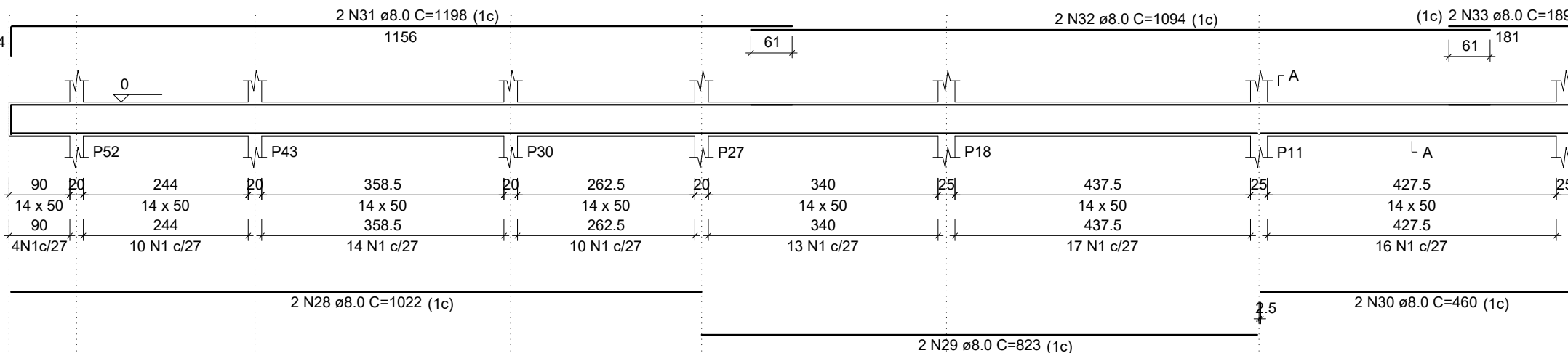
V26
ESC 1:75



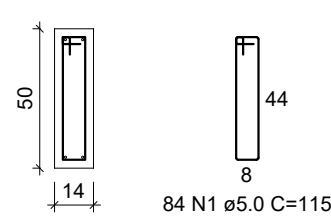
SEÇÃO A-A
ESC 1:25



V27
ESC 1:75



SEÇÃO A-A
ESC 1:25



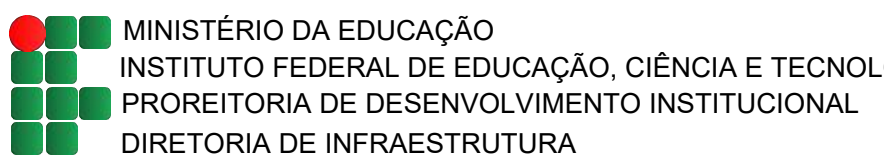
RELAÇÃO DO

AÇO	N	DIAM (mm)	QUANT
CA60	1	5.0	390
CA50	2	5.0	2
	3	8.0	2
	4	8.0	2
	5	8.0	2
	6	8.0	1
	7	8.0	1
	8	8.0	2
	9	8.0	2
	10	8.0	2
	11	8.0	2
	12	8.0	2
	13	8.0	2
	14	8.0	4
	15	8.0	2
	16	8.0	6
	17	8.0	6
	18	8.0	2
	19	8.0	2
	20	8.0	2
	21	8.0	2
	22	8.0	4
	23	8.0	4
	24	8.0	2
	25	8.0	2
	26	8.0	1
	27	8.0	2
	28	8.0	2
	29	8.0	2
	30	8.0	2
	31	8.0	2
	32	8.0	2
	33	8.0	2

RESUMO DO AÇÇ

AÇO	DIAM (mm)	C.TOTAL (m)
CA50	8.0	457.4
CA60	5.0	452.9
PESO TOTAL (kg)		
CA50	198.5	
CA60	76.8	

Volume de concreto (C-25) = 7.12
Área de forma = 115.96 m²



PROJETO EXECUTIVO ESTRUTURAL

APROVAÇÃO CORPO DE BOMBEIROS	APROVAÇÃO PREFEITURA MUNICIPAL
<hr/>	<hr/>


RESPONSÁVEL TÉCNICO	INSTITUTO FEDERAL DO PAUÍ
<hr/>	<hr/>

Obr: CONSTRUÇÃO CAMPUS 2024	Endereço:
-----------------------------	-----------

Conteúdo da prancha: XXXXXXX

Responsável Técnico:

Op. de CAD:	Data:	Escala: indicada	Revisão: FINA
-------------	-------	------------------	---------------

	INSTITUTO FEDERAL DE EDUCAÇÃO, CIÊNCIA E TECNOLOGIA DA PARAÍBA
	Reitoria
	Av. João da Mata, 256, Jaguaribe, CEP 58015-020, Joao Pessoa (PB)
	CNPJ: 10.783.898/0001-75 - Telefone: (83) 3612.9701

Documento Digitalizado Ostensivo (Público)

PROJETOS DE ENGENHARIA - PROJETO ESTRUTURAL - CONSTRUÇÃO SEDE PRÓPRIA -
UNIDADE: CAMPUS MAMANGUAPE - IFPB

Assunto:	PROJETOS DE ENGENHARIA - PROJETO ESTRUTURAL - CONSTRUÇÃO SEDE PRÓPRIA - UNIDADE: CAMPUS MAMANGUAPE - IFPB
Assinado por:	Carlos Diego
Tipo do Documento:	Projeto
Situação:	Finalizado
Nível de Acesso:	Ostensivo (Público)
Tipo do Conferência:	Cópia Simples

Documento assinado eletronicamente por:

- Carlos Diego dos Santos Carvalho, ASSISTENTE EM ADMINISTRACAO, em 24/10/2024 08:28:21.

Este documento foi armazenado no SUAP em 24/10/2024. Para comprovar sua integridade, faça a leitura do QRCode ao lado ou acesse <https://suap.ifpb.edu.br/verificar-documento-externo/> e forneça os dados abaixo:

Código Verificador: 1289648
Código de Autenticação: 2c53663891

